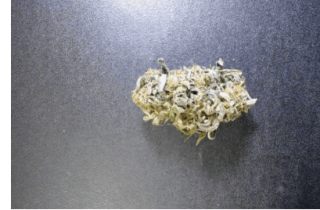


EVIO Labs Medford (pka Kenevir Research)  
 540 East Vilas Road, Suite F, Central Point, OR 97502  
 541-668-7444 / OLCC 010-1001626980D / www.EVIOLabs.com

## Hawaiian Haze

*For Info Only*

**Confident Cannabis ID:** 1910KR0356.5485  
**Sample ID:** M191696-01  
**Matrix:** Hemp  
**METRC Batch #:**  
**Sampling Method/SOP:** SOP.T.20.010  
**Date Sampled:** 10/29/19 09:00  
**Date Accepted:** 10/29/19  
**Harvest/Process Lot ID:**



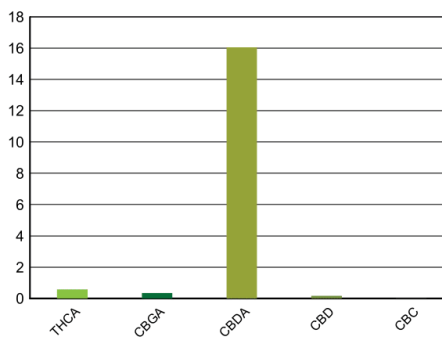
**Batch ID:**  
**Batch Size (g):**  
**Unit for Sale:**  
**Harvest/Production Date:**

### Cannabinoid Analysis

**FOR INFORMATIONAL USE ONLY - NOT FOR REGULATORY PURPOSES**

Date/Time Extracted: 11/01/19 15:59  
 Date/Time Analyzed: 11/05/19 15:32

Analysis Method/SOP: SOP.T.40.020

Cannabinoids	LOQ(%)	mg/g	% weight	Cannabinoid Profile
<b>Total THC</b> ((THCA*0.877)+Δ9THC)		<b>5.03</b>	<b>0.503</b>	
<b>Total CBD</b> ((CBDA*0.877)+CBD)		<b>142.75</b>	<b>14.275</b>	
THCA	0.100	5.73	0.573	
delta 9-THC	0.100	< LOQ	< LOQ	
CBGA	0.100	3.51	0.351	
CBDA	0.100	161.00	16.1	
CBD	0.100	1.55	0.155	
CBDV	0.100	< LOQ	< LOQ	
CBN	0.100	< LOQ	< LOQ	
CBG	0.100	< LOQ	< LOQ	
CBC	0.100	< LOQ	< LOQ	
CBDV-A	0.100	< LOQ	< LOQ	
Sum of tested Cannabinoids	0.100	171.00	17.1	

"Total THC" and "Total CBD" are calculated values and are an Oregon reporting requirement (OAR 333-064-0100). For Cannabinoid analysis, only delta 9-THC, THCA, CBD, CBDA are ORELAP accredited analytes. Cannabinoid values reported for plant matter are dry weight corrected; Oregon Water Activity action level is 0.65Aw and Oregon Moisture Content action level is 15%. Samples above limit will be highlighted RED; FD = Field Duplicate; LOQ = Limit of Quantitation.



Stephanie Moon  
 Laboratory Director - 11/5/2019



# Certificate of Analysis

EVIO Labs Medford (pka Kenevir Research)  
 540 East Vilas Road, Suite F, Central Point, OR 97502  
 541-668-7444 / OLCC 010-1001626980D / www.EVIOLabs.com

## Quality Control

Batch: M19K003 - ODA Exhibit B/ SOP.T.30.050 Prep for Cannabinoids

Blank(M19K003-BLK1)			Extracted: 11/01/19 15:59		Analyzed: 11/02/19 09:30		
Analyte	Result	LOQ	Recovery Limits	Analyte	Result	LOQ	Recovery Limits
THCA	< LOQ	0.100 (%)	< LOQ	delta 9-THC	< LOQ	0.100 (%)	< LOQ
CBDA	< LOQ	0.100 (%)	< LOQ	CBD	< LOQ	0.100 (%)	< LOQ
CBDV-A	< LOQ	0.100 (%)	< LOQ	CBDV	< LOQ	0.100 (%)	< LOQ
CBG	< LOQ	0.100 (%)	< LOQ	CBGA	< LOQ	0.100 (%)	< LOQ
CBN	< LOQ	0.100 (%)	< LOQ	CBC	< LOQ	0.100 (%)	< LOQ
Sum of tested Cannabinoid:	< LOQ	0.100 (%)	< LOQ				

LCS(M19K003-BS1)			Extracted: 11/01/19 15:59		Analyzed: 11/02/19 09:43		
Analyte	% Recovery	LOQ	Recovery Limits	Analyte	% Recovery	LOQ	Recovery Limits
THCA	87.9	(%)	70-130	delta 9-THC	104	(%)	70-130
CBDA	94.9	(%)	70-130	CBD	104	(%)	70-130

Stephanie Moon  
 Laboratory Director - 11/5/2019